



PICFI update and co-management

Presentation by Angela Bate to:

Fraser River Salmon Table

July 9, 2009



PICFI Background

- 2004 Reports provided recommendations on how to address Pacific fisheries issues
 - First Nations Panel report on fisheries (*Our Place at the Table*)
 - Joint Task Group on Post-treaty fisheries
- Engagement on these reports and Pacific Fisheries Reform showed support for:
 - Co-management, with increased input into decision-making
 - Greater commercial access for First Nation communities through voluntary licence retirement
 - More flexible management regimes to optimize harvests and maximize value.



PICFI overview

- PICFI is a \$175M, 5-year initiative to support the development and implementation of reforms to move toward integrated Pacific commercial fisheries
- It includes the following key elements
 1. First Nation participation in integrated commercial fisheries through voluntary licence retirement
 2. First Nations capacity building to support the development of First Nation commercial fisheries enterprises
 3. Fisheries accountability measures to support enhanced fisheries monitoring, catch reporting and enable the development of a traceability system
 4. Improved Co-Management to establish more effective mechanisms



PICFI design principles

- Conservation is paramount
- Consistent with treaty approaches
- Participation is voluntary
- Responsiveness
- Responsibility and collaboration
- Value
- Adaptive



PICFI Elements Update (1)

- Access
 - \$115M over 5 years on licence relinquishment program.
 - 10% for vessel acquisition
 - To date, \$39M spent on access (licences and quota) for a range of species (summary report on PICFI website)
 - Difficulty acquiring desirable species
 - Reviewing approach to determine gaps, alternative mechanisms
 - Work on clarifying distribution framework



PICFI Elements Update (2)

- Capacity Building (\$11-12M/5 years)
 - Funding for capacity building for fishing and business development
 - Mentoring program launched in 08-09
 - Work this year on developing in-river mentors
 - Links with Demonstration Fisheries to test feasibility, different approaches (in-river)



PICFI Elements Update (3)

- Enhanced Accountability (\$11-12M/5 years)
 - Work is beyond PICFI, builds on work already underway in commercial, recreational and First Nation fisheries
 - Enforcement component
 - Traceability
 - Monitoring and Compliance Panel
 - Plan for fall 2009
 - Strategic framework for catch monitoring for ALL fisheries
 - Catch monitoring standards



PICFI Elements Update (4)

- Co-management (\$11-12M/5 years)
 - Support for three broad areas (plus defined shares)
 - First Nations co-management capacity
 - Multi-sector co-management framework
 - Support for WSP implementation / watershed processes
 - Defined shares
 - Discussion paper for review and consultation (fall 2009)
 - Co-management advisor will coordinate work full-time and be primary point of contact internally



Co-management work...

- Inventory of existing processes and their level of discussion
 - link to scales of decision-making (regional)
- Work with FN Fisheries Council on capacity development
- Work on governance / decision-making framework
 - What is the “right” approach?
 - How do processes fit together?



Current Processes and Programs

ISDF

Intertribal
Treaty

FSWP

PICFI

WSP
processes

Bilateral
relationship

AAROM

Salmon
Table

FNFC

IHPC

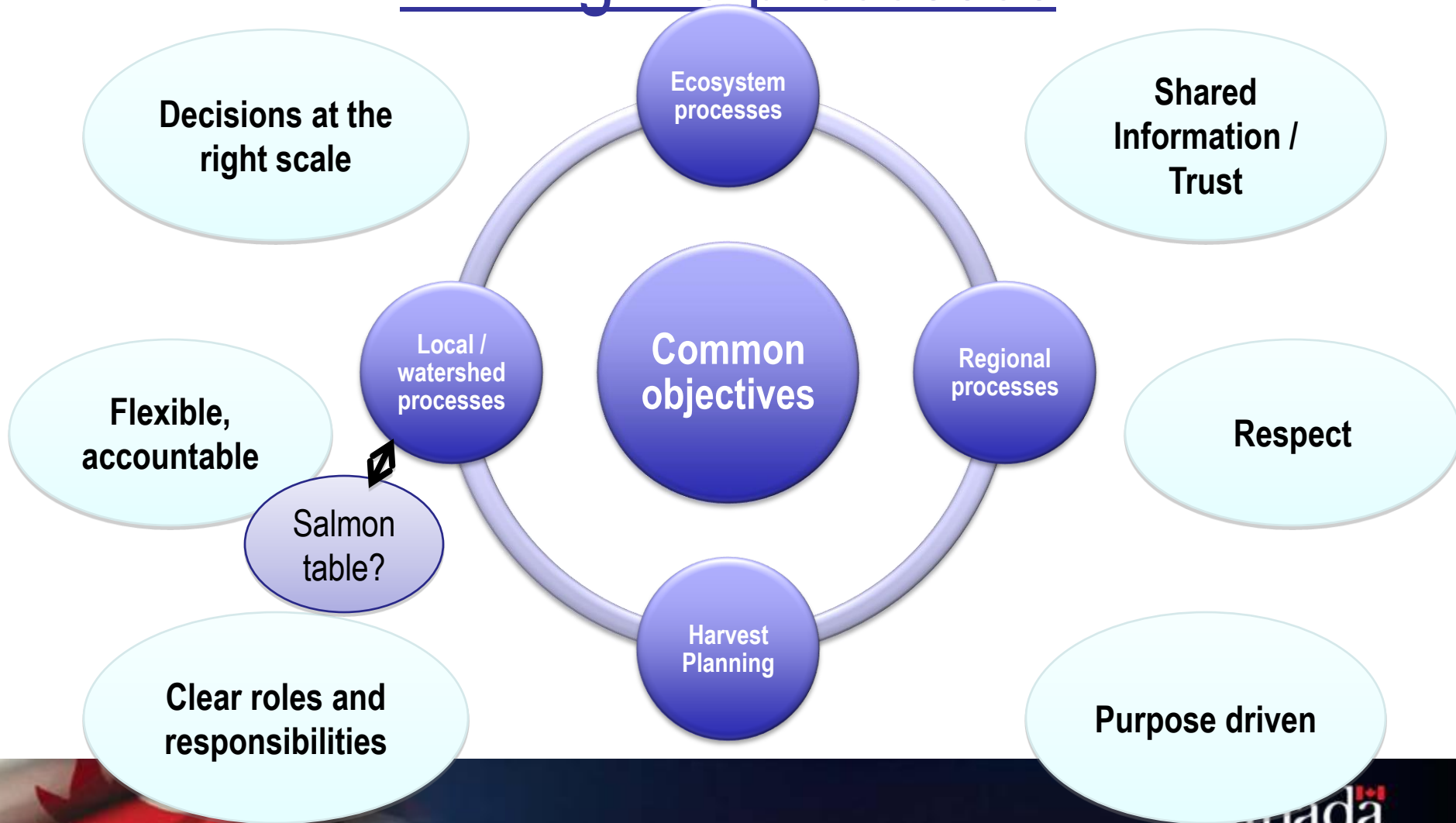
“Local”
projects

FRAFS

Fall
dialogues



Linking the processes





Discussion

- Gaps / Challenges
 - An approach for the Fraser?
 - Linking big picture and local projects
 - Transmitting co-management beyond personal relationships